

# Rising high

with



# Glimpses of our Redevelopment Work

**TRIMURTI, Parvati**



## NEST, Baner



## Shree Apartments, Bharatkunj Society-1





माझ्या सूहदांनो,

आज तुमच्याशी पत्ररुपी संवाद साधताना मला अतिशय आनंद होत आहे.

मला ह्या बांधकाम क्षेत्रात येऊन आज रोजी जवळपास ५० वर्षे पूर्ण झाली आहेत व स्वतःचा व्यवसाय सुरू करून आज ३८ वर्षे पूर्ण झाली आहेत. सुरुवतीला कॉन्ट्रॅक्टर म्हणून अनेक कारखाने, मेडिकल कॉलेज, २०० फ्लॅट चे निवासी संकुल अशी असंख्य कामे केली. आज आम्ही अतिशय अभिमानाने सांगू शकतो की आम्ही बांधलेल्या वास्तूमध्ये आमचा ग्राहक अतिशय सुख समाधानाने राहतो आहे आणि आपण कोणत्याही ग्राहकाला संपर्क केल्यास आपणास हाच अभिप्राय मिळेल याची आम्हाला खात्री आहे. याच संस्काराची शिदोरी घेऊन आता माझा मुलगाही माझा व्यवसाय वृद्धिंगत करीत आहे. आपल्या सर्व इच्छा पूर्ण होवोत हीच सदिच्छा.

धन्यवाद !

आपला विश्वासू,  
श्री. अरूण ना. जोशी

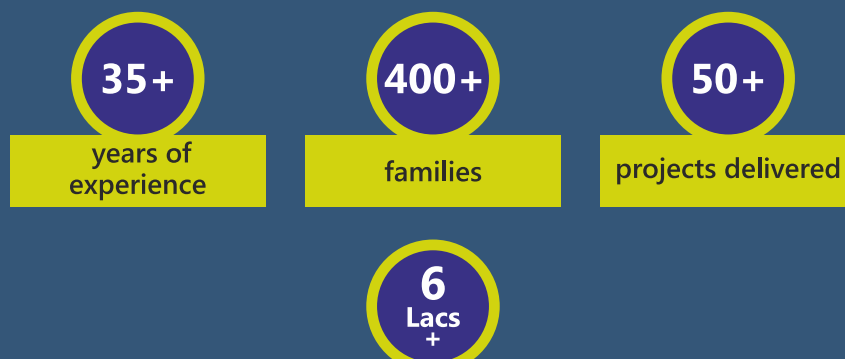


*"We make sure each and every aspect of the project meets stringent quality checks. Home buyers come with a dream and set of expectations which we have to fulfil to our best abilities."*

*Ameya A. Joshi*

## Creating Superior Living Spaces through Redevelopment

Our commitment to personalized attention and best craftsmanship ensures that every aspect of construction is handled with precision, ultimately shaping the vastu beautifully. Our goal is to provide our patrons with a modern lifestyle that exceeds their expectations. To achieve this, we constantly set new benchmarks for ourselves. Whether it's in design, material sourcing, project execution, finishing, or delivery, every detail is carefully considered to offer superior living spaces to our buyers.



sq. ft. spaces developed in the city centre in Pune Municipal Corporation

After two decades in contracting business, **Arun Joshi & Associates** evolved itself into a new age real estate development venture. The firm was among the pioneers of redevelopment in Pune. The vision of Skyline was founded by **Ameya Arun Joshi** who followed in his father's footsteps of an engineered and measured business method.

### Quality Centric Construction

Our approach is quality centric which has not just helped us build nearly 50 different projects but also build relationships with over 400 families. Our construction portfolio includes residential communities, factories and institutions.

## Deepak Apartment

Navi Peth



## Gulmohar Apartment

Baner



## Dinashree Apartment

Sahakarnagar



## Yashodhan

Sadashiv Peth



## Other Projects

**AMOL**, Mitramandal Colony | **VAIBHAV**, Mitramandal Colony | **DIPAK**, Navi Peth  
**NIKHIL CO-OP. SOCIETY**, Sahakar Nagar | **SHRIRAM**, Sadashiv Peth | **YASHODHAN**, Sadashiv Peth  
**LAXMI VILAS**, Mitramandal Colony | **MANOHAR**, Karve Nagar

# SKYLINE CONSTRUCTION CRAFT



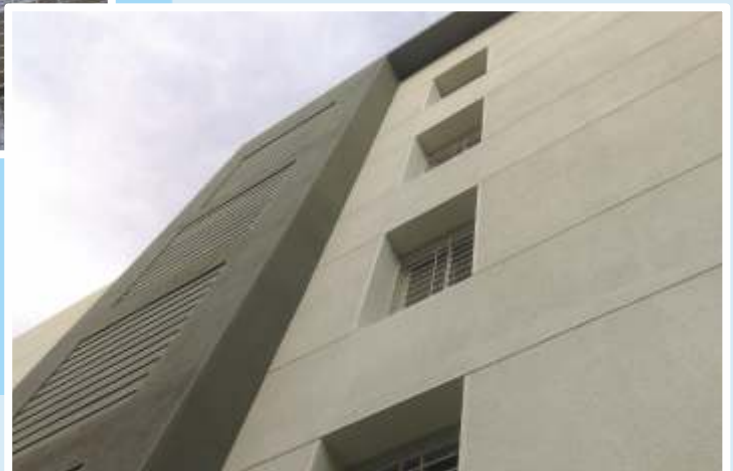
**DETAILING**



**VENTILATION**



**SYMMETRY**



**FINISHING**



Pushkaraj, Plot No. 9, Shri Gokul Society, Near Mhatre Bridge, Navi Peth, Pune - 411030  
020 - 24537320 / +91 99756 35353 | [info@skylinepune.in](mailto:info@skylinepune.in) | [www.skylinepune.in](http://www.skylinepune.in)